

EN | Metal wide belt sander

MAXX 6W





HOUFEK

MAXX 6W

EMERGENCY STOP







WIDE BELT SANDER

MAXX 6W



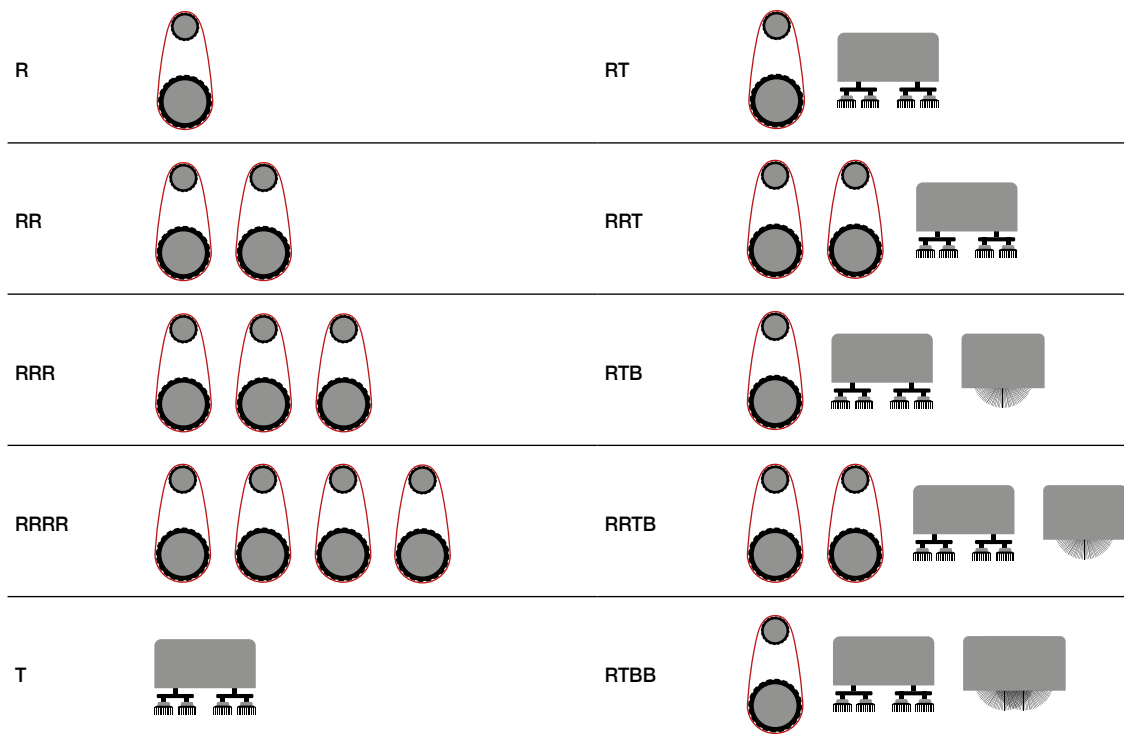
WIDE BELT SANDER
MAXX 6W

TECHNICAL SPECIFICATIONS

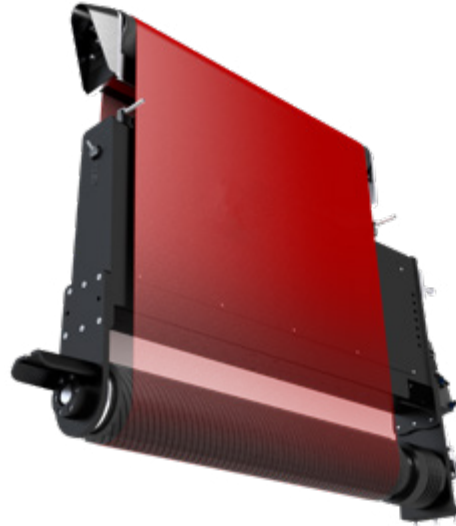
MAXX 6W WIDE BELT SANDER

| | | 400 | 800 | 1100 | 1300 | 1500 |
|------------------------------------|-------|-------------|------------|-------------|-------------|-------------|
| Max. working width | mm | 400 | 800 | 1100 | 1300 | 1500 |
| Min./max. workpiece height | mm | 0,5 – 160 | 0,5 – 160 | 0,5 – 160 | 0,5 – 160 | 0,5 – 160 |
| Feed belt motor frequency inverter | m/min | 2 – 17 | 2 – 17 | 2 – 17 | 2 – 17 | 2 – 17 |
| Motor – unit R | kW | 7,5 | 7,5 | 11 | 15 | 15 |
| Motor – unit T | kW | 1,2 | 1,2 | 2,2 | 3 | 3 |
| Motor – unit B | kW | 7,5 | 7,5 | 11 | 11 | 15 |
| Sanding belt (L x W) | mm | 2200 x 430 | 2200 x 830 | 2200 x 1120 | 2200 x 1330 | 2200 x 1530 |
| Contact roller diameter | mm | 160 | 160 | 160 | 160 | 160 |
| Speed of unit R | m/s | 10 – 35 | 10 – 35 | 10 – 35 | 10 – 35 | 10 – 35 |
| Speed of unit T, B | rpm | 600 – 2000 | 600 – 2000 | 600 – 2000 | 600 – 2000 | 600 – 2000 |
| Weight | kg | 2500 – 6300 | | | | |

UNIT CONFIGURATION



UNIT R



Standard equipment

- Rubber roller Ø 160 mm, 60Sh
- Sanding belt dimension 2200 x 430 / 830 / 1120 / 1330 / 1530 mm
- Feed belt motor frequency inverter - speed 2 - 17 m/min
- Min. a max. workpiece height 0,5 - 160 mm
- Main motor frequency inverter - speed 10 - 35 m / s
- Ammeter for motor of sanding unit
- NC machine control, colour Touchscreen 10,4"
- Optical sensor control of abrasive belt oscillation
- Fixed table height
- Height adjustable working unit
- Height adjustment controlled by frequency inverter
- Electronic measuring of table position with digital display
- Automatic adjustment of sanding unit to set position
- Rubber pressure rollers
- Automatic feed belt tracking
- Main motor pneumatic disc brake
- Pressure switch 3,5 - 4,0 bar
- Sanding belt
- CE certificaton

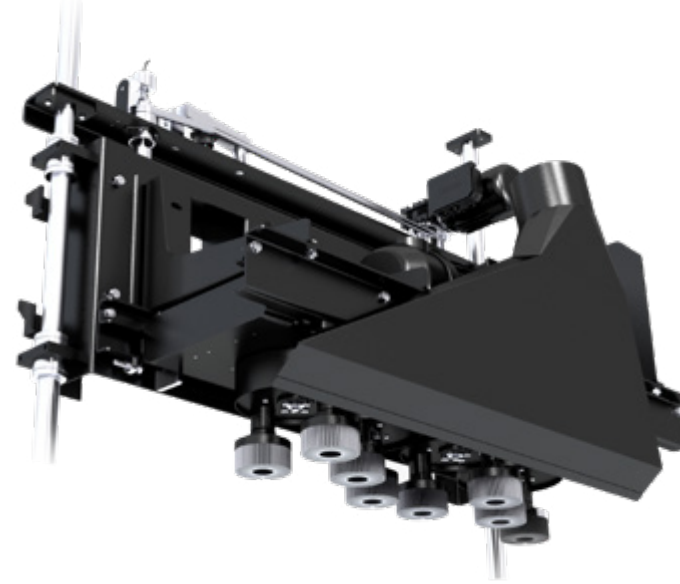
Optional equipment

- Water cooling of workpiece, filtration system
 - filtration unit with pump
 - modules with rinse jets and cleaning gun
 - stainless steel sanding unit and anti-corrosion treatment of frame
 - sensor of minimum water level
- Module for workpiece drying
- Module for workpiece hot air drying
- Sensor of minimum water level
- Vacuum pump for wet sanding - liquid separation
- Vacuum table
- Vacuum pump, dry process
- Reverse run
- Electronic adjustment of contact roller position by step motor
- Rubber roller Ø 120, 160, 240 mm (30 Sh, 45 Sh, 90 Sh)
- Front and rear extension table with rollers
- Front and rear extension table with flat plate
- Magnetic table with permanent magnet, width 150, 300 mm
- Magnetic table with electromagnet with magnetic force adjustment, width 150, 300 mm
- Table lift 220 mm
- Electronic limitation of maximum material removal
- Flat feeding belt
- Module for feeding belt cleaning
- Manual central lubrication

WIDE BELT SANDER
MAXX 6W

EMERGENCY STOP

UNIT T



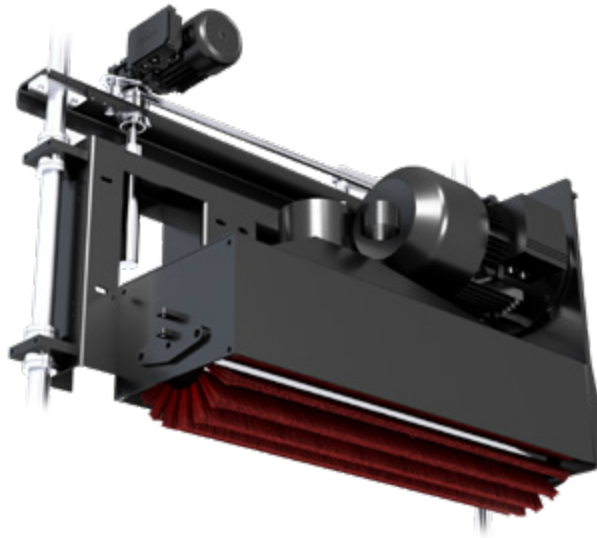
Standard equipment

- Ø disc D = 115 mm, width 400 mm - 4 ks, 800 mm - 8 ks, 1100 mm - 10 ks, 1300 mm - 12 ks, 1500 mm - 14 ks
- Main motor frequency converter 600 - 2000 RPM
- NC machine control, colour Touchscreen 10,4"
- Min. and max. workpiece height 0,5 - 160 mm
- Feed belt motor frequency inverter - speed 2 - 17 m/min
- Ammeter for motor of sanding unit
- Fixed table height
- Height adjustable working unit
- Height adjustment controlled by frequency inverter
- Electronic measuring of table position with digital display
- Automatic adjustment of sanding unit to set position
- Rubber pressure rollers
- Automatic feed belt tracking
- Pressure switch 3,5 - 4,0 bar
- CE certification

Optional equipment

- Water cooling of workpiece, filtration system
 - filtration unit with pump
 - modules with rinse jets and cleaning gun
 - stainless steel sanding unit and anti-corrosion treatment of frame
 - sensor of minimum water level
- Module for workpiece drying
- Module for workpiece hot air drying
- Sensor of minimum water level
- Vacuum pump for wet sanding
 - liquid separation
- Vacuum table
- Vacuum pump, dry process
- Front and rear extension table with rollers
- Front and rear extension table with flat plate
- Magnetic table with permanent magnet, width 150, 300 mm
- Magnetic table with electromagnet with magnetic force adjustment, width 150, 300 mm
- Table lift 220 mm
- Flat feeding belt
- Module for feeding belt cleaning

UNIT B



Standard equipment

- Feed belt motor frequency inverter - speed 2 - 17 m/min
- Main motor frequency convertor 400 - 2400 RPM
- Reverse run
- Min. and max. diameter of drum brush 120 - 300 mm
- Motorized height adjustment of brush unit B, with digital display
- Shaft diameter of drum brush unit 60 mm for width 400, 800, 1100, 1300 mm
- Shaft diameter of drum brush unit 80 mm for width 1500 mm
- Min. and max. workpiece height 0,5 - 160 mm
- Ammeter for motor of sanding unit
- NC machine control, colour Touchscreen 10,4"
- Fixed table height
- Height adjustable working unit
- Height adjustment controlled by frequency inverter
- Automatic adjustment of sanding unit to set position
- Electronic measuring of table position with digital display
- Rubber pressure rollers
- Automatic feed belt trancking
- Main motor pneumatic disc brake
- Pressure switch 3,5 - 4,0 bar
- CE certification

Optional equipment

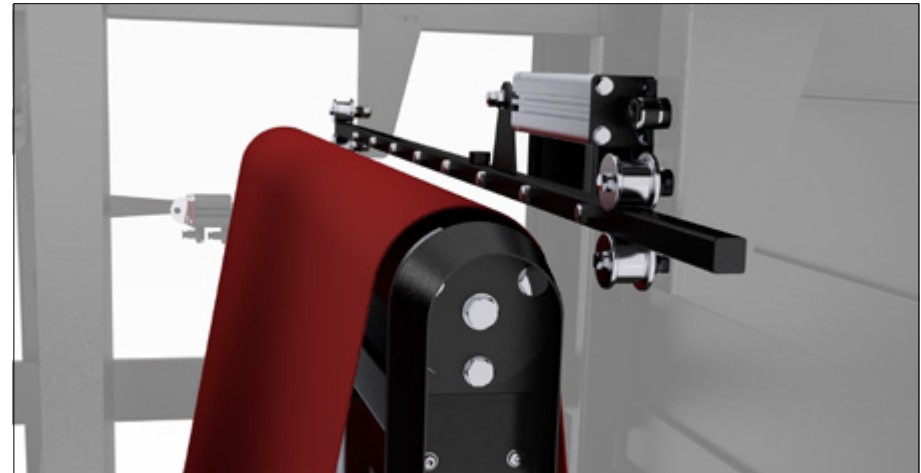
- Water cooling of workpiece, filtration system
 - filtration unit with pump
 - modules with rinse jets and cleaning gun
 - stainless steel sanding unit and anti-corrosion treatment of frame
 - sensor of minimum water level
- Module for workpiece drying
- Module for workpiece hot air drying
- Sensor of minimum water level
- Vacuum pump for wet sanding
 - liquid separation
- Vacuum table
- Vacuum pump, dry process
- Front and rear extension table with rollers 400 mm
- Front and rear extension table with flat plate 500 mm
- Magnetic table with permanent magnet 150, 300 mm
- Magnetic table with electromagnet with magnetic force adjustment 150, 300 mm
- Table lift 220 mm
- Elektronik limitation of maximum material removal
- Flat feeding belt
- Module for feeding belt cleaning

WIDE BELT SANDER
MAXX 6W



[O] TABLE EXTENSION WITH ROLLERS

- For long workpiece sanding



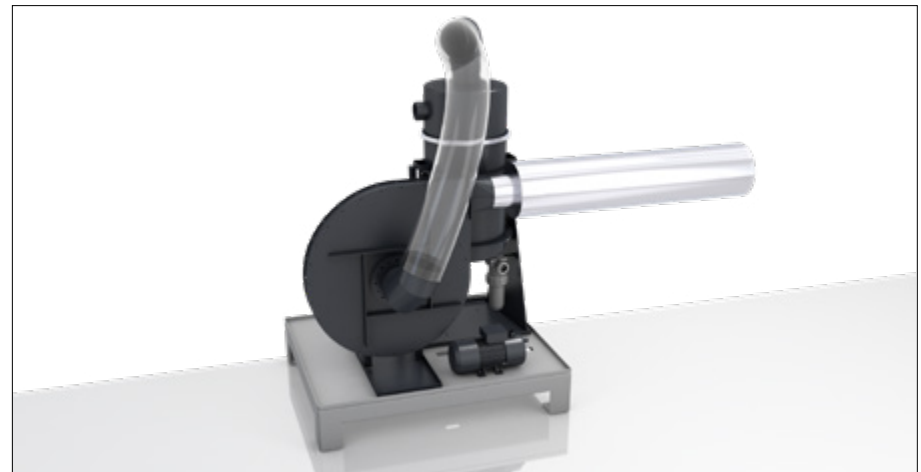
[O] TIMED AIR CLEANING DEVICE FOR SANDING BELT

- For cleaning and cooling of sanding belt



[O] MODULE WITH RINSE JETS AND CLEANING GUNS

- Water cooling of workpiece



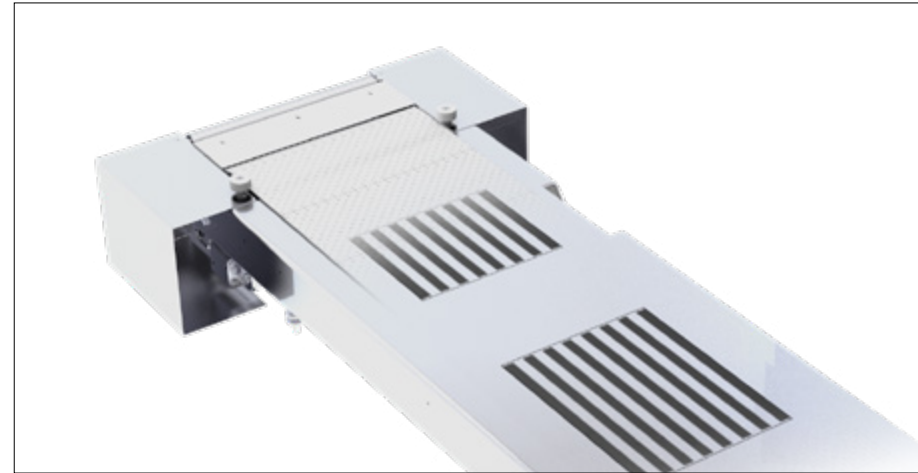
[O] PUMP FOR DRY SANDING

STANDARD AND OPTIONAL EQUIPMENT



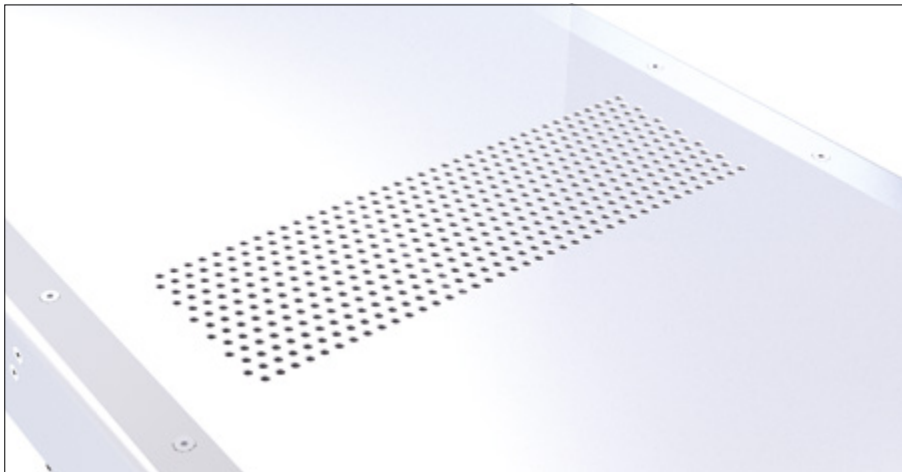
[O] NC OPERATING

- Comfort of machine working
- Program saving
- Error message



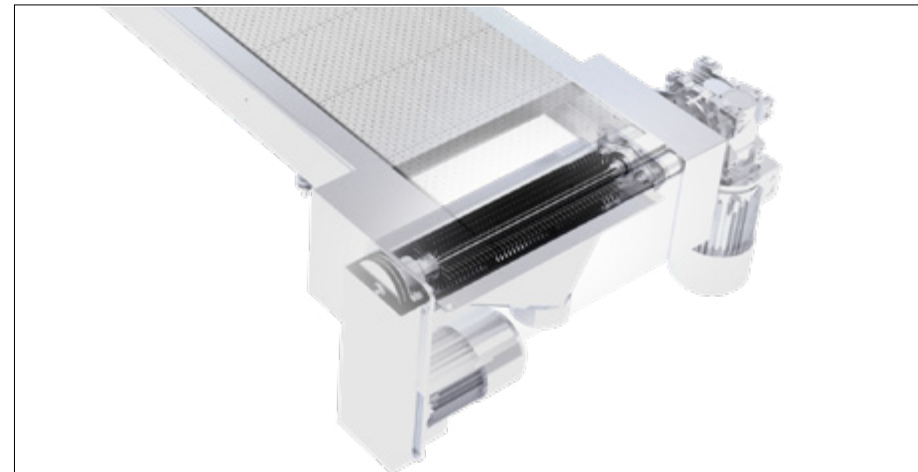
[O] MAGNETIC TABLE

- Sanding of magnetic materials smaller than 150 x 150 mm



[O] VACUUM TABLE

- Sanding of nonmagnetic materials smaller than 150 x 150 mm



[O] CLEANING FEED BELT DEVICE

- Cleaning feed belt from dust and chips



GERMANY

HOUFEK Woodworking Machines GmbH
Leopoldstr. 11a
95615 Marktredwitz

T: +49 9231-507 94 45
e-mail: houfek.de@houfek.com
www.holzbearbeitungsmaschinen-houfek.de



MEXICO

Houfek Mexico
Calle Guanajuato 1576
44260 Colonia Mezquitán Country
Guadalajara, Jalisco.

T: +52 133 3667 2160
e-mail: ventas.servicios@simcorporacion.com
<https://www.simcorporacion.com.mx/>



RUSSIA

OOO «HOUFEK»
ul. Kolpakova, build. 24A
141008 Mytishchi
Moscow

T: +7 495 510 11 95
e-mail: ru@houfek.com
www.houfek.msk.ru



UKRAINE

LLC Houfek
Pshenichnaya st. 8, 03680 Kiev

T: +38 044 502-41-95
T: +38 044 351-88-79
T: +38 044 44-159-44
e-mail: houfek@optima.com.ua



BRASIL

Houfek Brasil
Rua Miguel Gschwendtner, n°. 160
bairro Boehmerwald
89287-590 São Bento do Sul
Santa Catarina

T: 0055-47-9911-6115
e-mail: Houfek.br@houfek.com



POLAND

HOUFEK Sp. z o.o.
ul. Rynek 4, 32-540 Trzebinia

T: +48 697 977 071
T: +48 663 550 002
e-mail: biuro@houfek.com.pl
www.houfek.com.pl



HOUFEK a.s.
Obora 797
582 82 Golčův Jeníkov
Czech Republic

T: +420 569 430 700
T: czech market: +420 569 430 710
T: export: +420 569 430 711
+420 569 430 712
fax: +420 569 430 715

e-mail: houfek@houfek.com
export@houfek.com
www.houfek.com



EUROPEAN UNION
European Regional Development Fund
Operational Programme Enterprise
and Innovations for Competitiveness